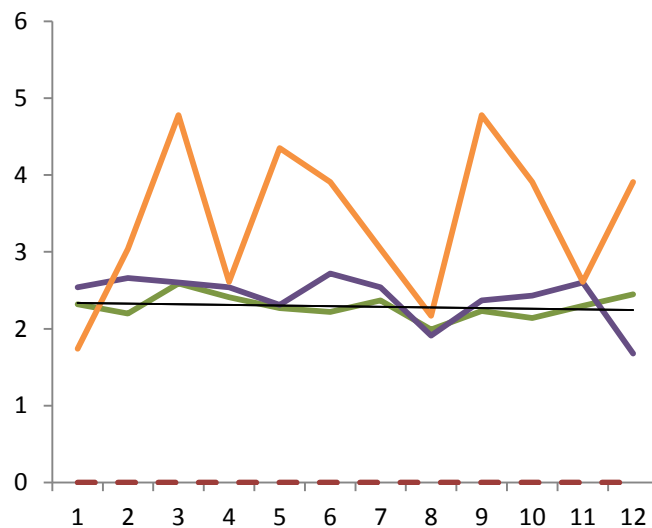


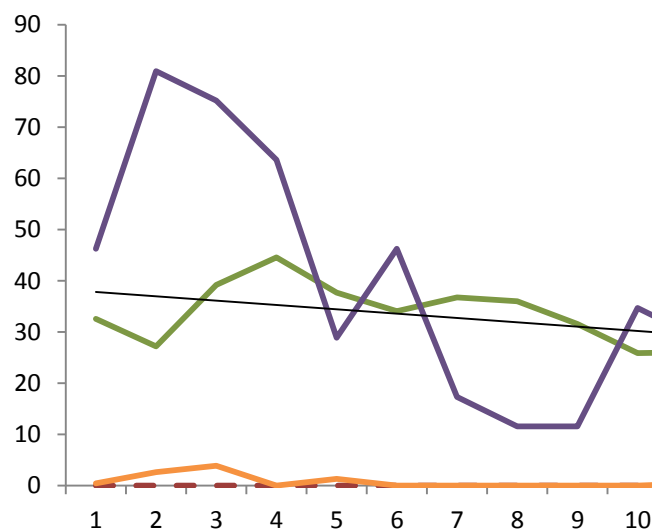
Accidental Dwelling Fires Per 10,000 head of population

Column1	Column6	Column7	Column8	Column9
	2013-Q1	2013-Q2	2013-Q3	2013-Q4
Scotland	2.3	2.2	2.6	2.4
West Lothian Area	2.54	2.66	2.6	2.54
Whitburn and Blackburn	1.74	3.04	4.78	2.61



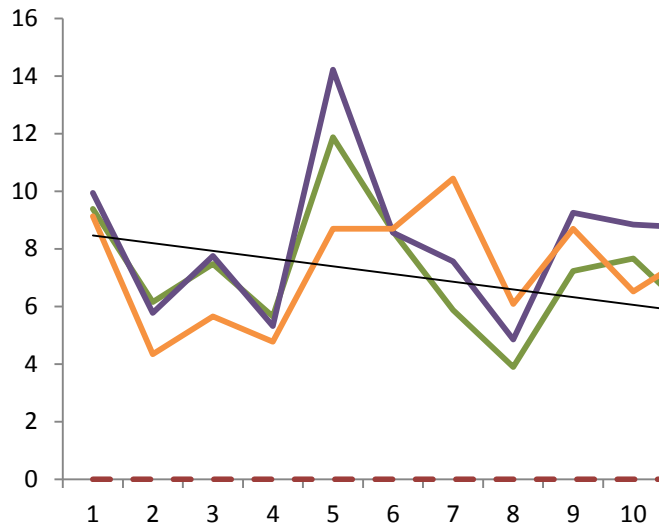
Accidental Dwelling Fires (Casualties and Fatalities)

Column1	Column6	Column7	Column8	Column9
	2013-Q1	2013-Q2	2013-Q3	2013-Q4
Scotland	32.54	27.21	39.2	44.53
West Lothian Area	46.3	80.9	75.2	63.6
Whitburn and Blackburn	0.4	2.6	3.9	0.0



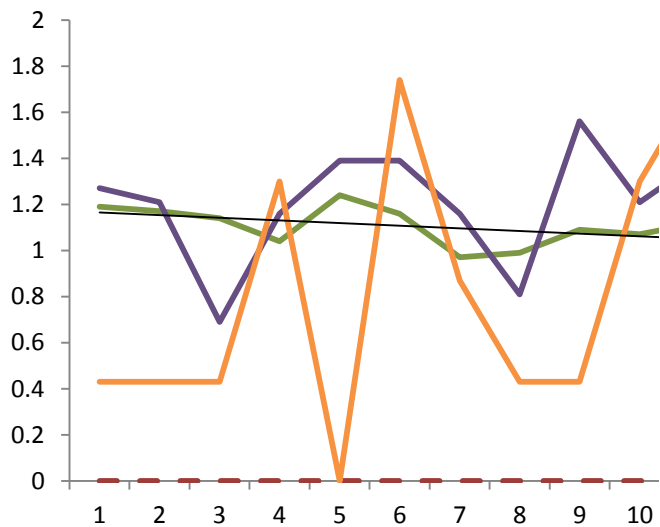
Deliberate Fires

Column1	Column6	Column7	Column8	Column9
	2013-Q1	2013-Q2	2013-Q3	2013-Q4
Scotland	9.4	6.2	7.5	5.7
West Lothian Area	9.94	5.78	7.75	5.32
Whitburn and Blackburn	9.13	4.35	5.65	4.78



Fires in Non Domestic Premises

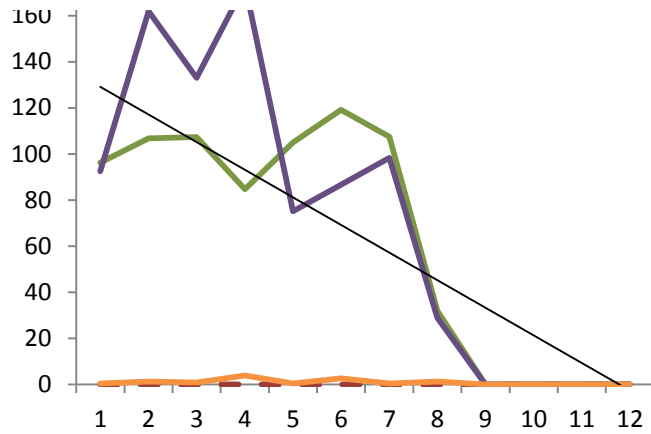
Column1	Column6	Column7	Column8	Column9
	2013-Q1	2013-Q2	2013-Q3	2013-Q4
Scotland	1.2	1.2	1.1	1.0
West Lothian Area	1.27	1.21	0.69	1.16
Whitburn and Blackburn	0.43	0.43	0.43	1.3



Non-fatal Non-Fire Emergencies Casualties Per 1,000,000 head of population

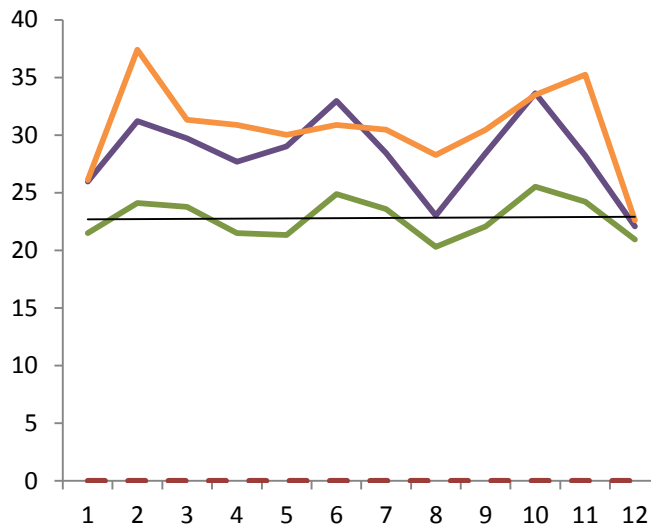
Column1	Column6	Column7	Column8	Column9
	2013-Q1	2013-Q2	2013-Q3	2013-Q4
Scotland	96.3	106.8	107.3	84.7
West Lothian Area	92.49	161.86	132.96	173.42
Whitburn and Blackburn	0.43	1.3	0.87	3.91





Unwanted Fire Alarm Signals

Column1	Column6	Column7	Column8	Column9
	2013-Q1	2013-Q2	2013-Q3	2013-Q4
Scotland	21.5	24.1	23.8	21.5
West Lothian Area	25.96	31.22	29.71	27.69
Whitburn and Blackburn	26.1	37.41	31.32	30.88



Column10	Column11	Column12	Column13	Column14	Column15	Column15	Column 16
2014-Q1	2014-Q2	2014-Q3	2014-Q4	2015-Q1	2015-Q2	2015-Q3	2015-Q4
2.3	2.2	2.4	2.0	2.2	2.1	2.3	2.5
2.31	2.72	2.54	1.91	2.37	2.43	2.6	1.68
4.35	3.91	3.04	2.17	4.78	3.91	2.61	3.91

--

— Scotland

— West Lothian Area

— Whitburn and
Blackburn

— Linear ()

— Linear (Scotland)

Column10	Column11	Column12	Column13	Column14	Column15	Column15	Column 16
2014-Q1	2014-Q2	2014-Q3	2014-Q4	2015-Q1	2015-Q2	2015-Q3	2015-Q4
37.68	34.06	36.73	35.97	31.59	25.88	26.07	26.07
28.9	46.3	17.3	11.6	11.6	34.7	28.9	40.5
1.3	0.0	0.0	0.0	0.0	0.0	0.4	1.3

--

— Scotland

— West Lothian Area

— Whitburn and Blackburn

— Linear ()

— Linear (Scotland)



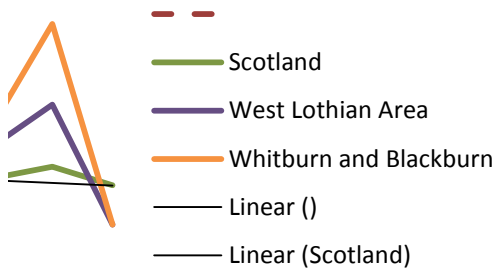
11 12

Column10	Column11	Column12	Column13	Column14	Column15	Column15	Column 16
2014-Q1	2014-Q2	2014-Q3	2014-Q4	2015-Q1	2015-Q2	2015-Q3	2015-Q4
11.9	8.6	5.9	3.9	7.2	7.7	5.7	4.4
14.22	8.56	7.57	4.86	9.25	8.84	8.73	4.97
8.7	8.7	10.44	6.09	8.7	6.52	7.83	6.96



11 12

Column10	Column11	Column12	Column13	Column14	Column15	Column15	Column 16
2014-Q1	2014-Q2	2014-Q3	2014-Q4	2015-Q1	2015-Q2	2015-Q3	2015-Q4
1.2	1.2	1.0	1.0	1.1	1.1	1.1	1.0
1.39	1.39	1.16	0.81	1.56	1.21	1.39	0.87
0	1.74	0.87	0.43	0.43	1.3	1.74	0.87









11 12

Column10	Column11	Column12	Column13	Column14	Column15	Column15	Column 16
2014-Q1	2014-Q2	2014-Q3	2014-Q4	2015-Q1	2015-Q2	2015-Q3	2015-Q4
105.1	119.1	107.5	32.0	0.0	0.0	0.0	0.0
75.15	86.71	98.27	28.9	0	0	0	0
0.43	2.61	0.43	1.3	0	0	0	0

--

-  Scotland
-  West Lothian Area
-  Whitburn and Blackburn
-  Linear ()
-  Linear (Scotland)

Column10	Column11	Column12	Column13	Column14	Column15	Column15	Column 16
2014-Q1	2014-Q2	2014-Q3	2014-Q4	2015-Q1	2015-Q2	2015-Q3	2015-Q4
21.3	24.9	23.6	20.3	22.1	25.5	24.2	20.9
29.02	32.95	28.44	23.01	28.44	33.64	28.21	22.08
30.01	30.88	30.45	28.27	30.45	33.49	35.23	22.62

- 
-  Scotland
-  West Lothian Area
-  Whitburn and Blackburn
-  Linear ()
-  Linear (Scotland)